

# Standard Range

---

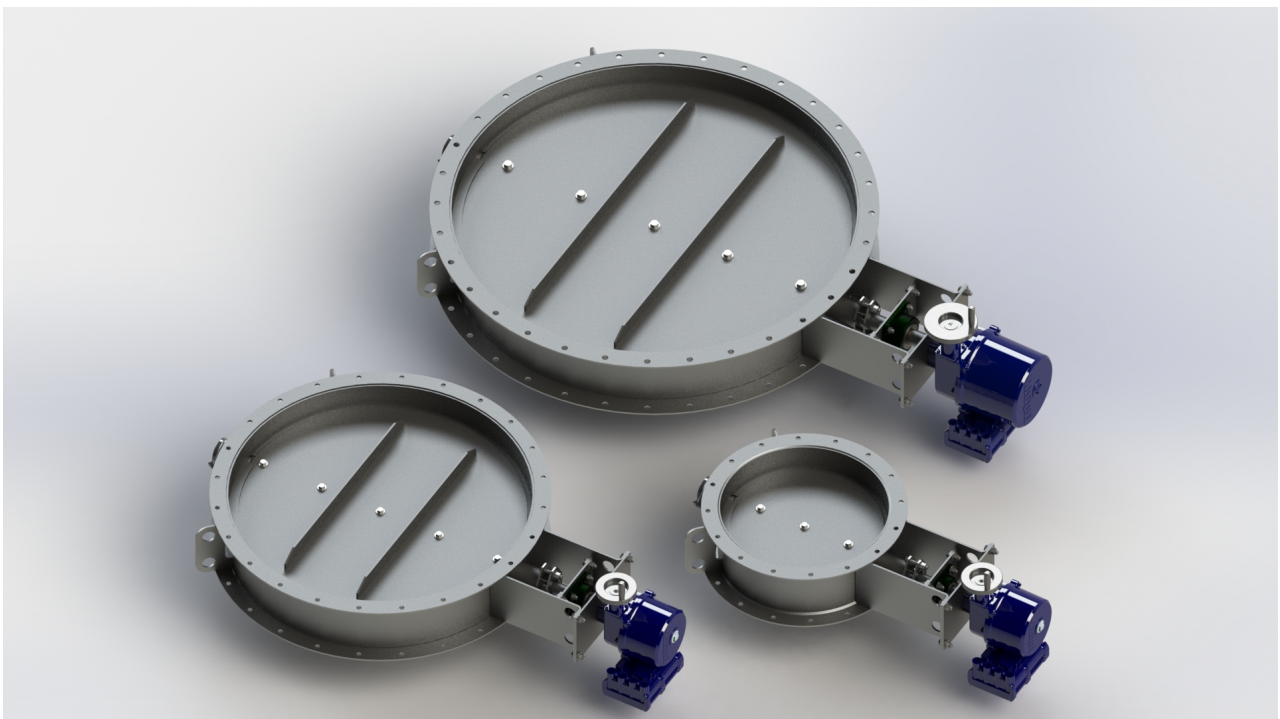
[DTL dampertechnology.com/dampers/standard-range/](http://dampertechnology.com/dampers/standard-range/)

**DTL have now launched a Standard Range of Butterfly Damper Valves available for quick delivery, in a variety of materials, for all applications that require a shut-off of up to 99.8%.**

---

The new range, which are powered by premium quality actuation and controls, are available in diameters ranging from 200mm to 1200mm (in increments of 50mm) and are designed for maximum design pressures of 500mmWG, in 3 temperature ranges to accommodate operating temperatures of up to 600 Deg C.

All options can be fitted with pneumatic rack & pinion actuators (double acting or spring return), electric quarter turn actuator or manual gearbox & handwheel. Materials of construction and ordering options / codes are shown below – alternatively **CLICK HERE** to request our Standard Range product flyer.



Materials Of Construction					
Range	Max Temp	Body	Blade	Shaft	Bearing
Low temp	250° C	Carbon Steel	Carbon Steel	SS304	Ball
Med temp	400° C	Carbon Steel	Carbon Steel	SS304	Plain
High temp	600° C	SS304	SS304	SS304	Plain

Other materials available on request.

Size (NOM ID - mm)	Temp' Range	Actuator Type	Actuator Mode	Operation	Control Accessory	Position Feedback
<b>Size</b>	<b>LT</b> Low Temp <b>MT</b> Med Temp <b>HT</b> High Temp	<b>EL</b> Electric	<b>NA</b> Not Applicable	<b>MD</b> Modulating	<b>POS</b> Positioner (4-20mA)	<b>CPT</b> Position Transmitter (4-20mA)
				<b>OC</b> Open/Close	<b>NA</b> Not Applicable	<b>NA</b> Not Applicable
		<b>PN</b> Pneumatic	<b>SO</b> Spring Return Open <b>SC</b> Spring Return Closed <b>DA</b> Double Acting	<b>MD</b> Modulating	<b>POS</b> Positioner (4-20mA)	<b>CPT</b> Position Transmitter (4-20mA)
				<b>OC</b> Open/Close	<b>S524</b> Solenoid (5/2) - 24VDC <b>S5110</b> Solenoid (5/2) - 110VDC <b>S324</b> Solenoid (3/2) - 24VDC <b>S3110</b> Solenoid (3/2) - 110VDC <b>NA</b> Not Applicable	<b>LS</b> Limit Switches
		<b>MN</b> Manual				<b>NA</b> Not Applicable
		<b>BS</b> Bare Shaft				

Standard Range Ordering Codes Table